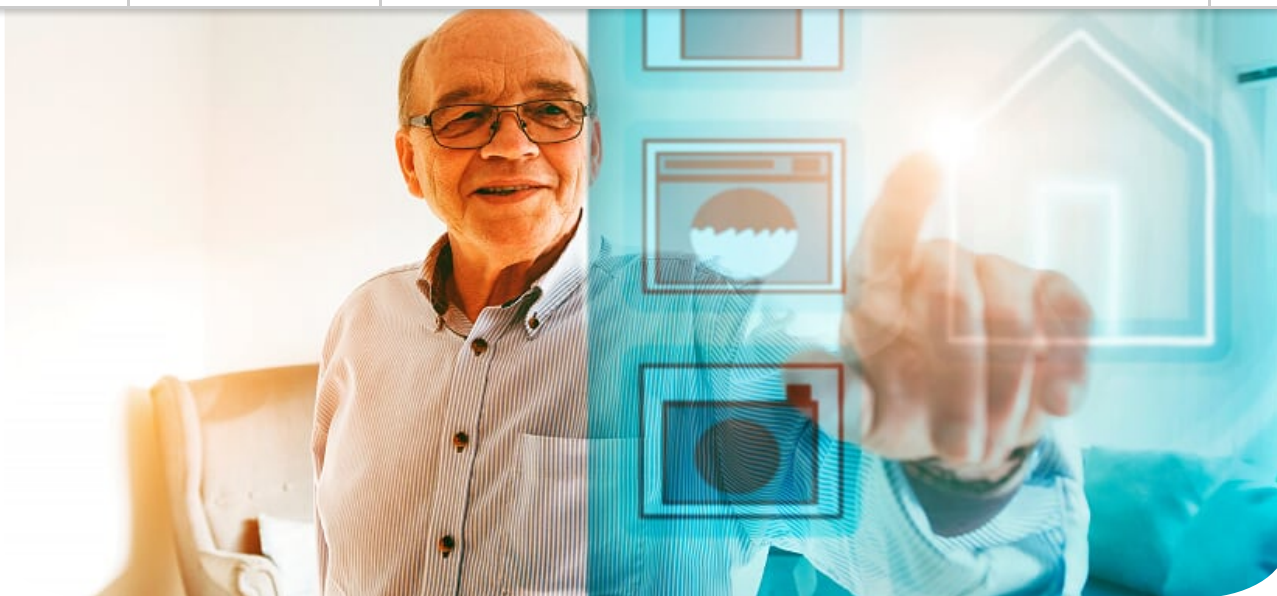


[Subscribe](#)[Past Issues](#)[Translate](#)

# essense

Education  
Supporting Smart  
ENvironments for  
SENIORS

**Erasmus+**

This project has been  
funded with support from  
the European Commission

## Newsletter

Dear ESSENSE-Follower,

thank you very much for your interest in ERASMUS+ ESSENSE. We are happy to inform you about the latest developments in the BIM and AAL-related didactic content and the status of the pilot tests. The pilot tests are a major step towards integrating the didactic contents within the platform which will be freely accessible after the project ends. Additionally, we will inform you about the latest activities by ESSENSE.

We would be pleased if you recommend our newsletter and the ESSENSE

project to interested colleagues. Please register for the newsletter [here](#).  
ESSENSE is also on Twitter, follow us [here](#).

All the best,

the ESSENSE Team



Share



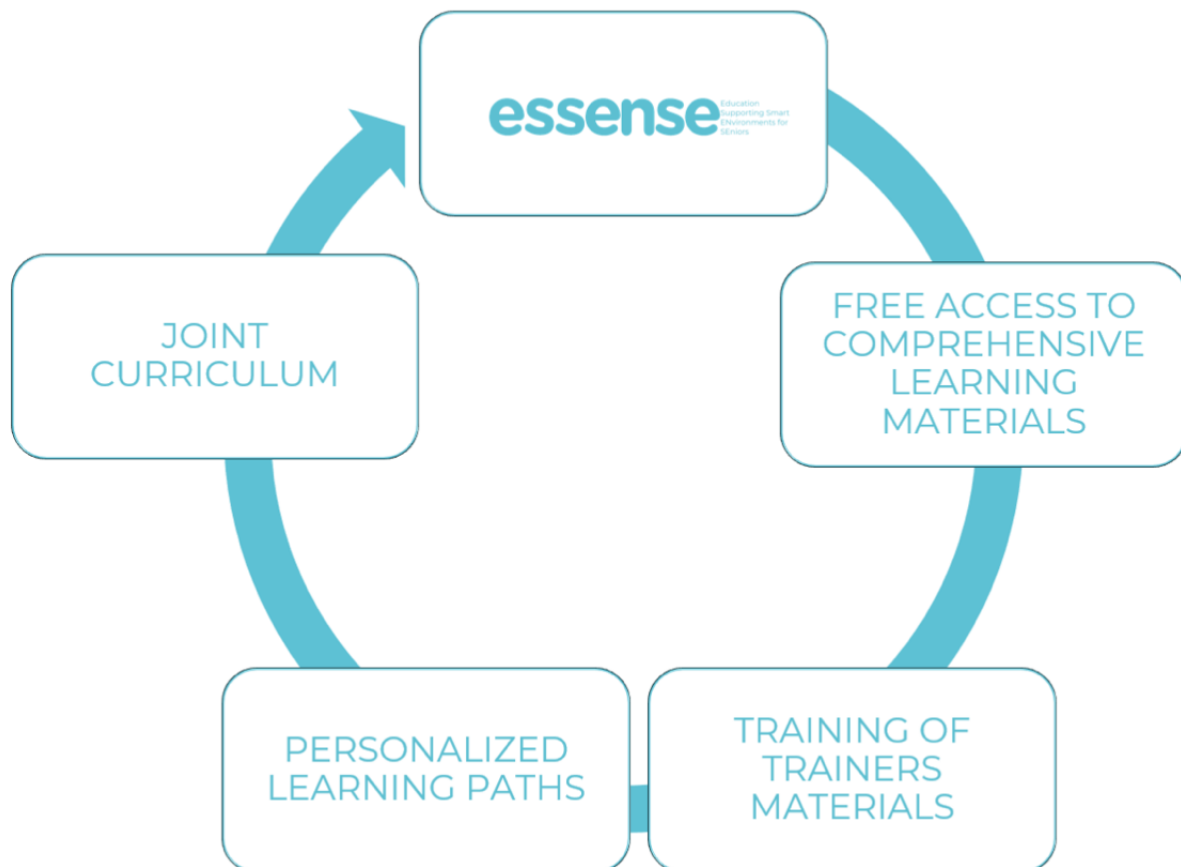
Tweet



Forward

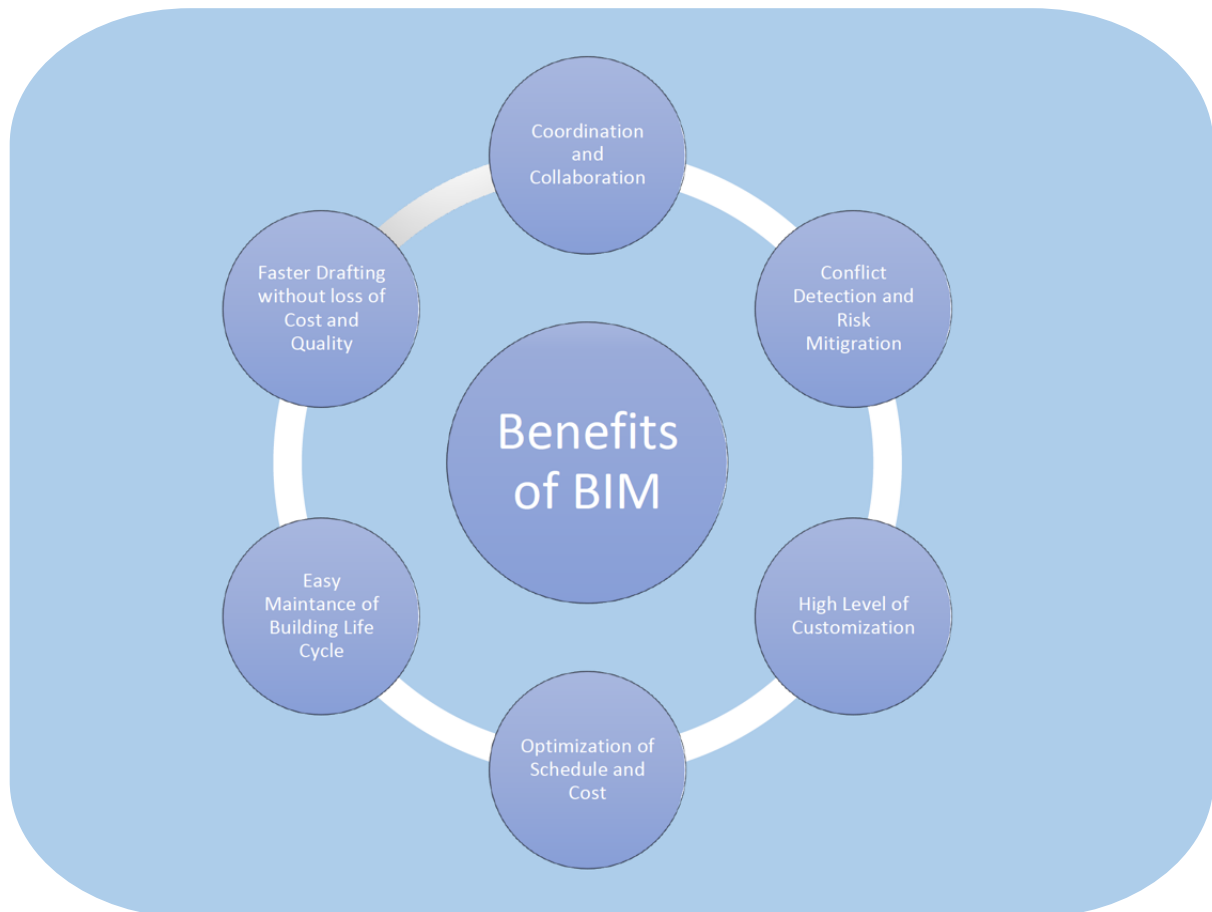
---

## What is ESSENSE?



**ESSENSE is an EU Erasmus+ project for the Education Supporting Smart Environments for SENiors, bringing together partners in Germany, Slovenia, Spain and Republic of North Macedonia.**

ESSENSE project aims to create an innovative didactic content to promote the integration of Building Information Modelling (BIM) and Ambient Assisted Living (AAL) concepts in the Architecture, Engineer and Construction sector. It will consist of a Joint Curriculum, didactic materials and a collaborative platform in line with the needs of the different target users identified. After the project officially ends, a Blueprint will ensure the follow-up of the results.



Building Information Modelling (BIM) is a technology that has rapidly gained in importance in the last few years.

A large number of different interpretations of the term BIM that are currently available reflect the different perspectives of the players involved, from the planner to the executing companies to the solution provider.

As there is a limited understanding of the term BIM, there is also a limited understanding of the changes that BIM introduces.

However, the BIM method is considered the solution to the problems of inefficient communication and limited cooperation in the construction industry.

For the development of the didactic content, we are working on the relationship between the BIM method and AAL to give an answer to this misunderstanding.

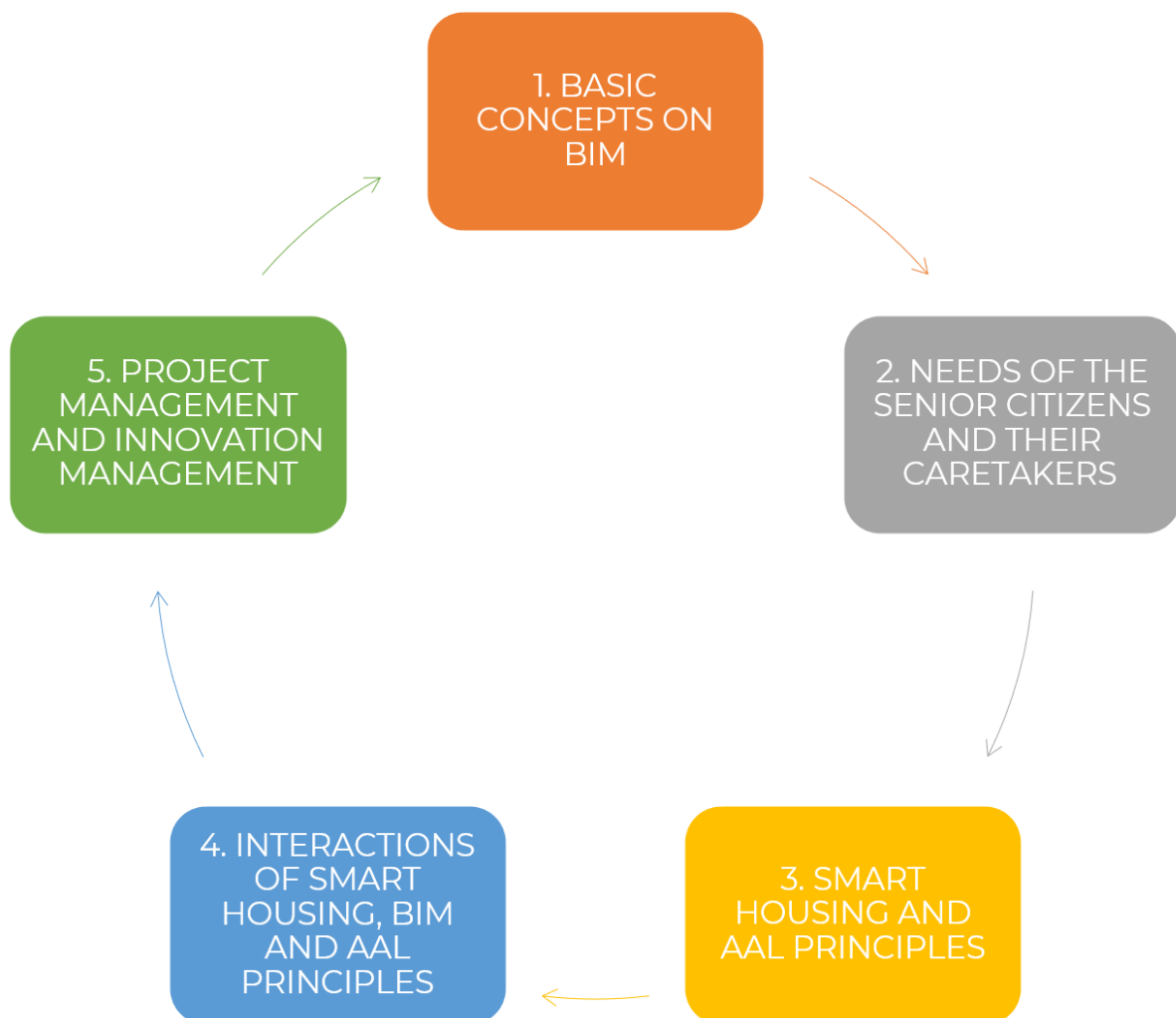
**More information at the ESSENSE website**

---

# Current Work Update:

## Update on the development of the free didactic material

During the last months, ESSENSE has further developed its Didactic Content: The didactic content is divided into 5 modules:



### 1. Basic concepts on Building Information Modelling

Building Information Modelling (BIM) is a technology that has rapidly gained in importance in the last few years.

The objective of the unit „Basic Concepts on BIM“ is to obtain an overview of the definition of BIM and the possible uses; to show the advantages of BIM or computer-aided design concerning the data associated with the 3D objects.

## **2. The needs of the senior citizens and their caretakers**

As older adults are a growing part of the population, addressing their needs is becoming one of the main challenges for the building sector. Unit 2 presents crucial knowledge that professionals need to create the built environment supportive of older adults and their caretakers. The unit presents common issues that older adults and their caretakers face in everyday life and suggests both building-related and technological solutions that can improve the occupant quality of life. Although the unit provides specific and actionable suggestions, a lot of focus is given in providing general skills and knowledge, which the learners can use to provide flexible and customized solutions to various user groups in different contexts.

For more information about the other modules "Smart Housing and AAL Principles", "Interactions of Smart Housing, BIM and AAL Principles" and "Project Management and Innovation Management" [please visit our website](#).

These modules will be freely available at the end of the project in 2021 on the ESSENSE Collaborative Platform with innovative quizzes, exercises and some extra lectures.

---

## **Update: Status of the pilot test**



The pilot test serves to test all roles and functions of the ESSENSE platform extensively. Currently, Saints Cyril and Methodius University of Skopje (UKIM) has finalized the platform's technical description under the working title Development of Specifications in the first version. The pilot test will be based on the use-cases and platform features described in the documentation. The developers of alfatraining are completing the technical description of the application programming interface (API) for the integration of alfaview into the ESSENSE platform. The technical description shows which individual steps the pilot test will involve. The individual roles of all platform actors, such as Admin, Lecturer, Student and Guest, will be tested extensively. Furthermore, the administration, e.g., course registration, course management and delivery of the course content, will be tested in a live setting.

---

## Next steps



Photo: Alexander Limbach/ Adobe Stock

In the last quarter of 2020, the didactic material will be finalized for testing.

ESSENSE will enroll an official announcement to the educational community (teachers, student and experts in BIM, habitat design, education, etc.) to participate in the pilot test action. During this pilot test, the educational philosophy, joint curriculum and didactic materials will be assessed within the eLearning platform. This action will enable the partnership to polish the mismatches on the didactic materials or eLearning platform functionalities.

**More Information on our website**

---

## **Collaboration of the European projects ESSENSE and SHELD-ON**



The European projects ESSENSE and [SHELD-ON \(Smart Habitat for the elderly\)](#) are generating synergies due to a common objective: to facilitate a safer, more comfortable and accessible life for the elderly. ESSENSE was presented at the first conference held in Riga 2018. Since then, both initiatives have exchanged data with each other to elaborate reports on the situation and evolution of smart housing and the ambient assisted living within the BIM method. SHELD-ON is financed by the [European Cooperation in Science and](#)

[Technology \(COST\)](#). This organisation is a research network that offers an open space for collaboration among scientists across Europe. SHELD-ON provide impetus to research advancements and innovation. The project aims to foster knowledge exchange and the development of a joint research agenda in terms of design and development of multifunctional indoor environments. The goal is to meet the requirements of Europe's ageing population while promoting healthy and safe ageing. Thanks to the Sheldon team for your contributions in our project.

---

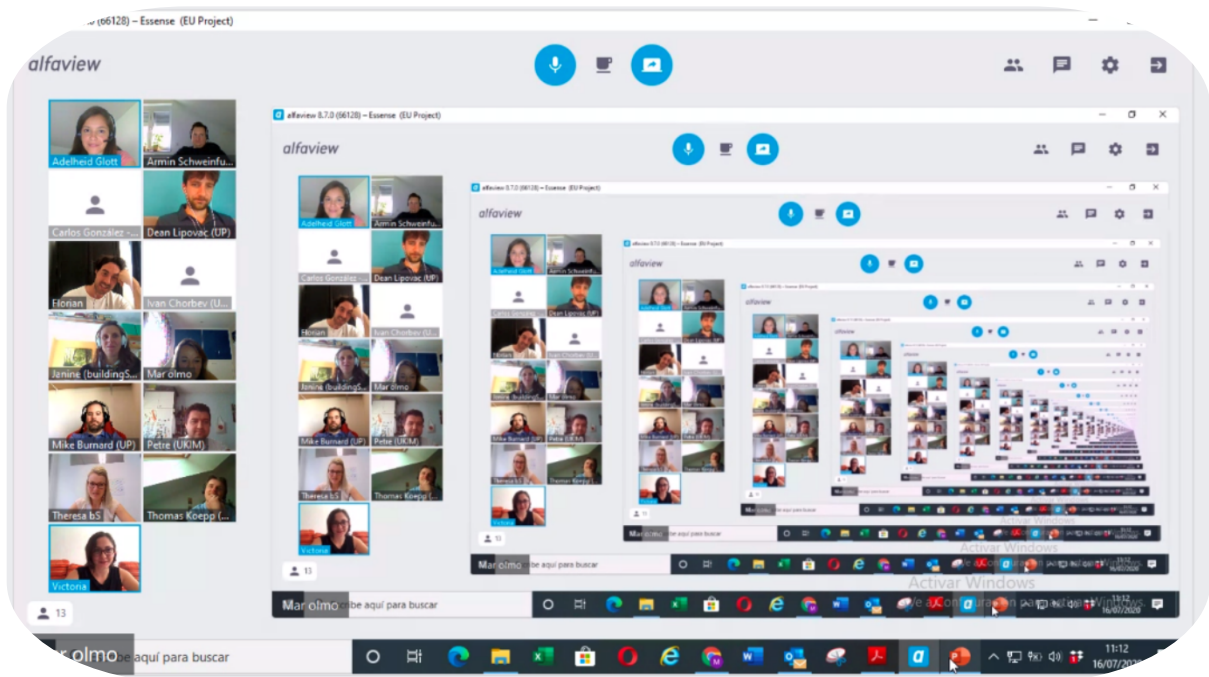
## ESSENSE and Events



### **European Online Week of Active & Healthy Ageing (2.-6. November 2020)**

This week is an initiative of the AAL Programme, European Innovation Partnership on Active and Healthy Ageing (EIP on AHA) & Joint Programming Initiative More Years, Better Lives (JPI MYBL). This online week is full of innovative and varied debates and panels. It will feature a series of discussions and webinars. The direction will be about priorities and strategies, but also action. There will be plenty of participation from high-profile thought leaders from international bodies, members of the European Parliament, and a range of other policy makers and experts on health, care and ageing. [More Information.](#)

---



The Team of ESSENSE met online.

On 16 July 2020 the 4th transnational partner meeting of the European Erasmus+ ESSENSE project took place. The main focus of this meeting was the development of the course contents as well as the collaboration platform on which the course contents, train the trainer materials and exam templates are provided. [Read more >>](#)

---

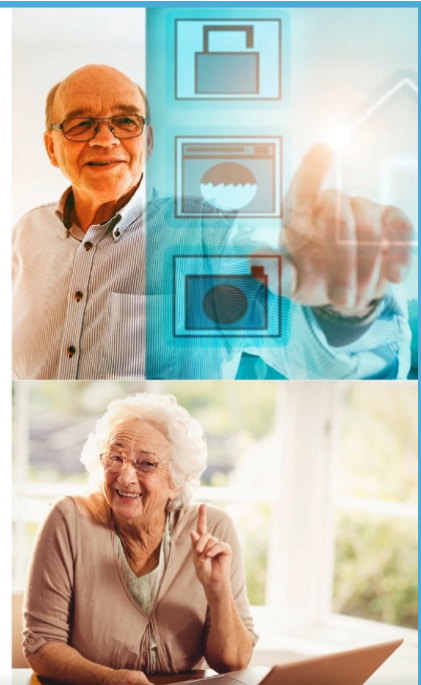
## 4th Transnational Partner Meeting (online)

ESSENSE participated in this years United Nations International Day of Older People (UNIDOP2020) with a short movie about the project. You can watch the movie when you click at the image or [here](#).

Happy UN International Day of Older  
Persons by  
ERAMUS+ Project-Team

**essense** Education  
Supporting Smart  
ENVironments for  
SEniors

 @ProjectEssense #UNIDOP2020 #ESSENSE



Short video at Twitter about ESSENSE at the UN International Day of Older People (UNIDOP2020).

---

## Upcoming Events

- November, 2nd-6th, [European Week of Healthy and Active Ageing](#)
- November, 24th-25th, [BIM World 2020 in Munich](#)



Subscribe for the ESSENSE Newsletter

---

## ESSENSE Partners

[More information about the partners here >>](#)

---



## Follow us!

Follow ESSENSE on Twitter and visit our website!



Please subscribe to the ESSENSE Newsletter

---



# Erasmus+

This project has been  
funded with support from  
the European Commission

Project number 2018-1-DE01-KA203-004292



Tweet



Share

---

This email was sent to <<Email Address>>

[why did I get this?](#) [unsubscribe from this list](#) [update subscription preferences](#)

ERASMUS+ ESSENSE c/o buildingSMART Germany · Wiener Platz 6 · Dresden 01069 · Germany

